



# THE HOOD RELEASE

The Newsletter of the Northeast Classic Car Museum

www.classiccarmuseum.org

WINTER 2010

## NEW AT THE MUSEUM

In May 2009, the Northeast Classic Car Museum opened a newly renovated building. Expansion was made possible when the Museum acquired a facility of nearly 30,000 square feet that adjoined the existing Museum. Museum Trustees evaluated Museum expansion and concluded that expansion was feasible and would further elevate NECCM as a significant automotive museum and tourist attraction.



This was the second major expansion in the Museum's 11 years of existence. The Museum conducted a Capital and Endowment Campaign effort to fund the expansion/renovation and provide for the Museum's future. More than half of the Capital Fund was committed by Mr. George Staley, by the Robert C. Smith Foundation, and by a donation from NBT Bank. Generous contributions from other corporate and private donors also enabled the renovations. The building was completely renovated to include new exterior wall covering to be consistent with the rest of the Museum's buildings, new windows, insulation, electrical, and

HVAC. The building renovated is at least 70 years old, and once housed Bennett-Ireland, a manufacturer of fireplace equipment. The Museum has taken advantage of the building's clerestory windows and elevated center space to complement exhibits.

The new expansion allowed the Museum to expand their exhibit to include over 160 prime examples of vintage and classic cars. A special, limited-time exhibit, "Built for Speed", features nearly 25 vintage race cars. Styles include sprint, dirt, NASCAR, Indy, stock and more. The race cars will be on exhibit through the middle of April 2011. For information on the exhibit planned for 2011-2012, please see page 4.

The expansion nearly doubled the size of the exhibit space at the Museum. To handle the increased workload, the Museum hired a fourth employee in April 2010, Bookkeeper Marc Michaels. Marc brings a wide array of experience to the Museum, and is a great addition to the NECCM team.

## in this issue

<b>New at the Museum.....</b>	<b>1</b>
<b>In The Headlights.....</b>	<b>2</b>
<b>From Our President.....</b>	<b>2</b>
<b>Gift Shop Goodies.....</b>	<b>3</b>
<b>Year End Planning.....</b>	<b>3</b>
<b>Exhibitors Needed.....</b>	<b>4</b>

## A MESSAGE FROM OUR PRESIDENT

Since 1997, the Northeast Classic Car Museum has been host to, cared for, and displayed the finest examples of classic and antique automobiles. Over the past thirteen years, a new generation of automobiles have become antique and have nostalgic display value. NECCM has been fortunate in our ability to expand our facility to exhibit this new generation of old cars. At the core of our success are the generous owners who entrust their cars to us for our many visitors to enjoy. To those car owners, I thank you! The lifeblood of our Museum, however, is our members. Whether you are a volunteer who has earned a membership or someone with a keen interest and love for cars, YOU sustain our Museum and I thank you as well. Your enthusiasm is contagious, so please spread the word. We are also grateful to the individuals,

foundations, corporations, and government supporters whose generosity and vision support our endeavors – and of course to George Staley and his family.

I'm happy to report that in 2010, NECCM saw an increase in visitors despite the terrible nationwide economic trend. This can be attributed, I believe, to the quality of our exhibits, the friendliness of our staff, and word of mouth advertising that the Museum is a 'must see' attraction. We are gearing up for 2011 and excited about prospects for new and interesting cars for display. Our rotating display will see the race cars depart and a new exhibit of cars named for animals arrive. We look forward to presenting our "Wild Things" exhibit in May 2011. As Christmas and Hanukkah approach, I'd like to remind you that a Gift Membership for a friend is a wonderful present, as is a little something from our well-stocked Gift Shop.

- Joseph Angelino

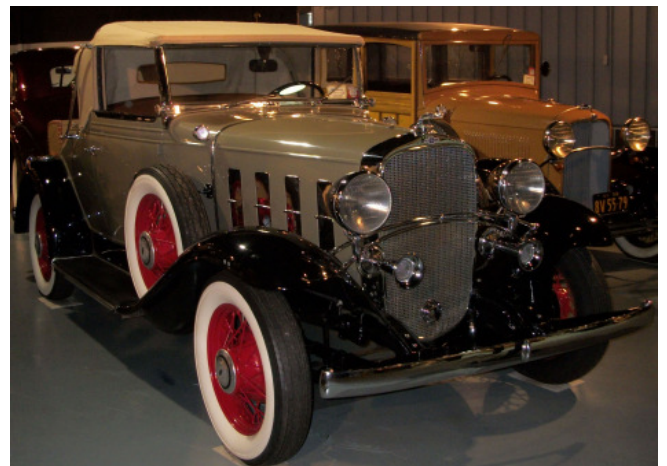


The Museum was the recent beneficiary of a generous donation of a 1932 Chevrolet Confederate. This beauty was donated by Mr. Robert Pietrafesa, and is now proudly displayed in our Pre-War Collection.

The Confederate was a new offering in 1932, designed to compete with Ford's newly released V-8. With a manual synchromesh transmission, downdraft carburetor, and selective freewheeling drivetrain, the Confederate was able to get 60 hp out of its 6-cylinder engine (compared to 65 hp from Ford's V-8). The Confederate, nicknamed the "Baby Cadillac", helped Chevrolet overtake Ford in sales for the first time. However, 1932 was the only year the Confederate was produced.

Our thanks go to Mr. Pietrafesa and the many others who have donated vehicles to the Museum over the years. The

Museum is a 501(c) 3 not-for-profit corporation; therefore most contributions to NECCM are tax-deductible. Vehicle donations help the Museum in a variety of ways. Donated vehicles help us keep our exhibits looking fresh and help generate necessary revenue for program expenses. For more information on donating a vehicle, please contact Executive Director Doreen K. Bates at [doreen@classiccarmuseum.org](mailto:doreen@classiccarmuseum.org) or at 607-334-2886.



## YEAR END CHARITABLE GIVING

It's the time of the year when our thoughts turn to spending time with family and friends, holiday shopping and parties, cozy evenings by the fire, and of course, planning our charitable giving. When making those plans, please consider the Northeast Classic Car Museum. If you would like to support the programs and exhibits at the Museum, please take a moment to send back this form to *NECCM, 24 Rexford Street, Norwich, NY 13815* with your donation.

**YES! I would like to support the Museum with a tax-deductible donation.**

Name \_\_\_\_\_  
Address \_\_\_\_\_  
City \_\_\_\_\_ State \_\_\_\_\_ Zip \_\_\_\_\_  
Phone \_\_\_\_\_ E-Mail \_\_\_\_\_

- Enclosed is my check for \$ \_\_\_\_\_.  
 Please charge my VISA/MasterCard/AMEX/Discover card.

Card # \_\_\_\_\_  
Expiration Date \_\_\_\_\_ Signature \_\_\_\_\_

*Please contact Executive Director Doreen Bates at 607-334-2886 for information about stock gifts, donation of vehicles, or advance planning.*



## GIFT SHOP GOODIES

Are you looking for a unique gift for that special someone? Want a Museum exclusive? Collect vintage automobile memorabilia? Look no further than the Northeast Classic Car Museum Gift Shop. We feature a variety of auto-related books, jewelry, toys, and die-cast model cars. Our Museum exclusives include logo shirts (tees, golf, & denim), pins, patches, keychains, mugs, videos, hats, and more.

One of our newest items is the 2011 NECCM Calendar, featuring some of the 'babes' of the Museum: Miss April, the 1955 Corvette, Miss October, the 1959 Studebaker Silver Hawk, and of course, the Twins, a pair of 1956 Chevy Bel Air beauties.

**SPECIAL OFFER!** Kick off the Holiday shopping season with a great deal from the Museum. From Friday, November 26 through Thursday, December 23, receive 10% off all Museum Gift Shop purchases.

*Not valid for clearance items, gift certificates, or admission passes.  
Valid in-store only; cannot be combined with any other discounts or offers.*

## EXHIBITORS NEEDED

The special exhibit for 2011-2012 has been announced! "Wild Things" will be opening May 13, 2011, and will feature cars with animal, bird, reptile, and insect names. If you (or someone you know) has a car that fits this category, and would be willing to become a Museum exhibitor, please send vehicle information and picture(s) to doreen@classiccarmuseum.org, or to 24 Rexford Street, Norwich, NY 13815, ATTN: Doreen Bates.

The Exhibit Committee is also looking for vehicles to update our Post-War Collection. They are in need of cars from the late 50's, 60's, and 70's to give this exhibit a fresh look. They would particularly like to have a '59 Chevy and a '57 Ford on exhibit.

## BOARD OF TRUSTEES

President: Joseph Angelino  
Vice President: Philip Giltner  
Secretary: D. Michael Nearing  
Treasurer: Warren Nash

Homer Burch  
Anthony Capaccio  
Sewain Conklin  
James I. Dunne  
Richard Ellinwood  
Thomas Emerson  
Daryl Forsythe  
Randy Gibbon

Richard L'Hommedieu  
Edward O'Reilly  
Steven Purdy  
James Robison  
Richard Snyder  
Stuart Spence  
George Staley  
RC Woodford

Executive Director: Doreen K. Bates

The Museum is now strutting its stuff in a new way! Our website has been given an updated look and many of our Gift Shop items can be purchased online. Sign up for our e-newsletter and find us on [facebook](#). We are constantly updating our website, so be sure to check often for news, events, and upcoming specials.



NYS Rt. 23, 24 Rexford Street  
Norwich, New York 13815  
697-334-AUTO (2886)  
email: info@classiccarmuseum.org

PERMIT #54  
U.S. POSTAGE  
PAID  
NON-PROFIT ORG.  
NORWICH, NY 13815

RETURN SERVICE REQUESTED